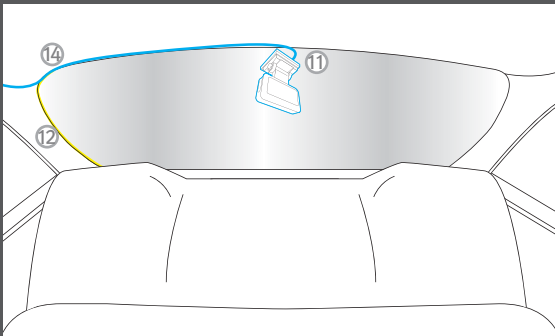
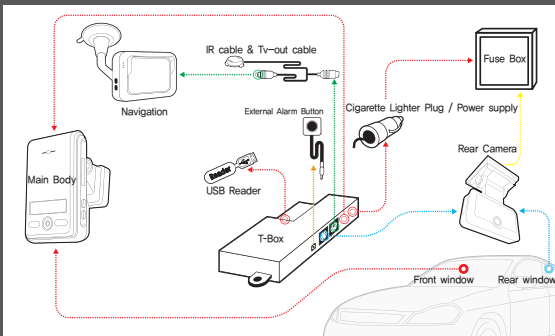


Interior view of installation (Front)



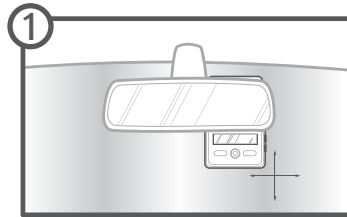
Interior view of installation (Rear)



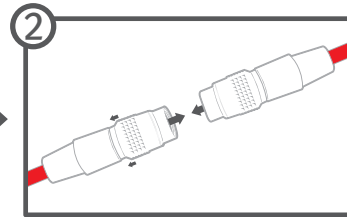
Product configuration

Caution

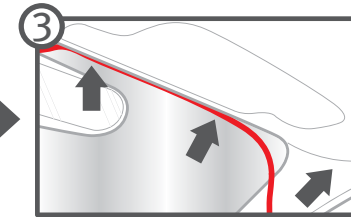
- Please read the manual carefully before installing the product.
- Please ignition off before installing the product.
- For parking surveillance, the cigar lighter jack should be removed.
- For parking surveillance, please ask the mechanic or technician for assistance.
- The fuse box may vary. Please check the vehicle manual before the installation.
- The Cabling can be done by the user's convenience.



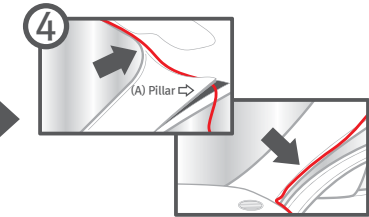
Place the product on the windshield as picture and then clean up the windshield to install. Remove the cover of sticker on the bracket and put the product (with bracket) on the windshield.



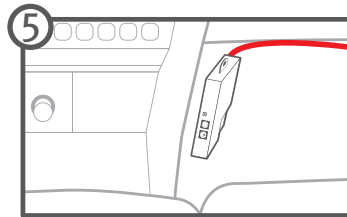
Connect the cable from T-box and the main body.
•분리시에는 본체 케이블쪽 연결홈을 뒤로당겨 주십시오.



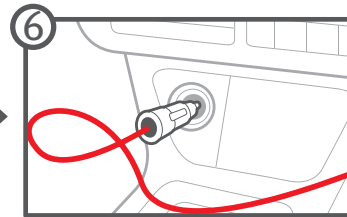
For the neat installation, put the cable into the gap between windshield and the ceiling as picture.



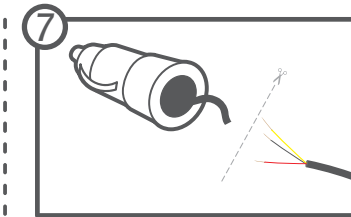
Dismantle A pillar like the picture and then put the cable into the rubber molding.



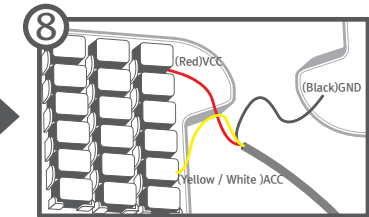
Place the T-Box to install and fix (attach) the T-Box with sticker or screws.



Connect the cigar lighter plug into cigar lighter to power on.



For parking surveillance, cut the cigar lighter plug like picture and then connect the wires to the fuses in the fuse box.

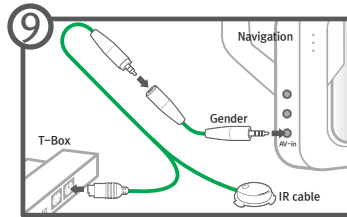


While connecting the wire to the fuse, please connect "ground wire" first.

TIP Recommended points :
underneath of driver seat, dashboard, underneath

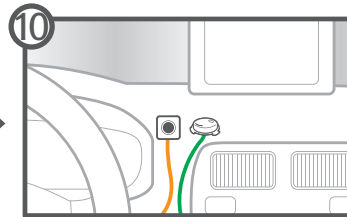
• The cable color will be
(red / yellow / black) or (red / white / black)

- Red - VCC (internal light, emergency light for all-time power supply)
- Yellow or white - ACC (cigar lighter power)
- Black - GND (car frame)

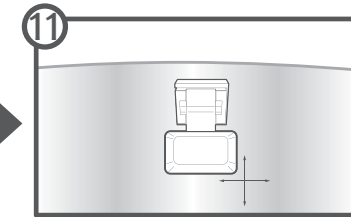


In order to see the live view from the product, please connect T-box and the monitor with the gender like picture.

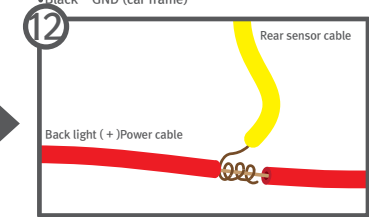
• You may purchase the gender for the monitor if in need.



Place and install the external alarm button receiver at convenient place to use. Install the remote controller receiver at visible place to use.

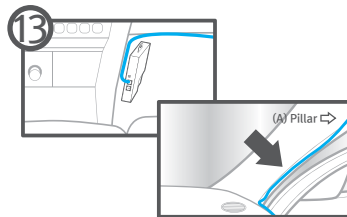


Place the rear camera on the rear window as picture.

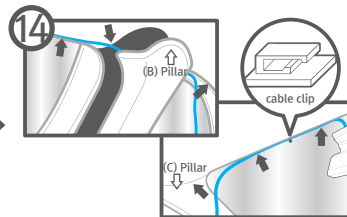


In order to see the live view for rear camera, please open the back light case and check the power cable (+). Pill out the power cable (+) like the picture and then connect the rear sensor cable. Afterward, wrap up the connecting point (pilled) by vinyl electrical tape.

• The location and color of rear lamp wire may vary.

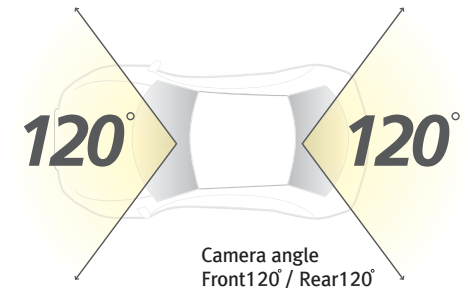


In order to hide (install) the rear camera cable, dismantle "A pillar" and insert the cable into rubber molding as picture.



Dismantle "B pillar" and "C pillar" and then insert the cable into the rubber molding. Afterward, put the cable into the gap between rear window and ceiling as picture.

TIP If the user can not put the cable into the molding, the user may use "cable clip" for neat installation.



Camera angle
Front120° / Rear120°